

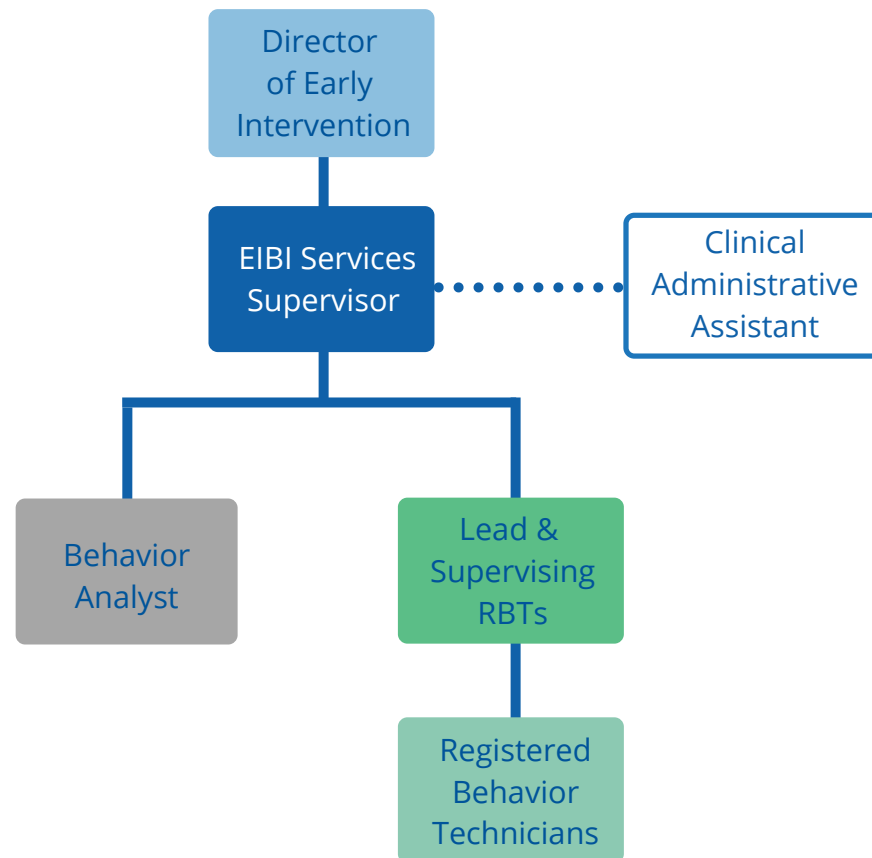
# Early Intervention

Leadership Directory  
for Parents & Guardians

2022



# Organizational Chart

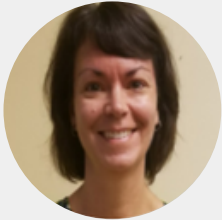


# Primary Points of Contact

At Vista Autism Services, we value communication and appreciate an open exchange of information, questions and concerns. This FAQ topic chart will help you determine the best point of contact when reaching out to Vista staff within the Early Intervention program.

| Question Topic   | Primary Staff Contacts  |
|--|---|
| Unexpected events, running late, calendar  | Clinical Administrative Assistant   |
| General updates about child that day or prior evening (e.g. up late, bad morning, didn't eat)                                | Registered Behavior Technicians<br>(call the room or comment at drop off) |
| Changes to attendance schedule, daily room schedule, schedule of SLP/OT/PT, staff rotation with children, concerns with RBTs | Lead & Supervising RBTs   |
| Individual programming for child, goals, interventions, addressing behaviors, parent trainings                               | Behavior Analyst  |
| Program structure, program model, concerns with staff  | EIBI Services Supervisor  |

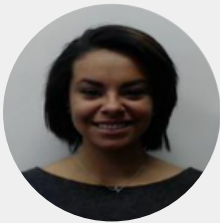
# Leadership Directory



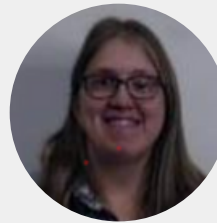
**Sandy Heisey**  
Clinical Administrative Assistant  
sandra.heisey@vistaautismservices.org  
717-835-1116 x1802



**Kendra Peacock**  
Director of Early Intervention  
kendra.peacock@vistaautismservices.org  
717-583-5102 x1109



**Krystal Joubert**  
Lead & Supervising Registered Behavior Technician  
krystal.joubert@vistaautismservices.org  
717-835-1116 x1822



**Mary Beth Rose**  
Lead & Supervising Registered Behavior Technician  
mary.rose@vistaautismservices.org  
717-835-1116 x1819



**Sandra Kachelries**  
EIBI Services Supervisor  
sandra.kachelries@vistaautismservices.org  
717-835-1116 x1803



**Amy Woodward**  
Behavior Analyst  
amy.woodward@vistaautismservices.org  
717-835-1116 x1821



**Kayse Lawton**  
Lead & Supervising Registered Behavior Technician  
kayse.lawton@vistaautismservices.org  
717-835-1116 x1824